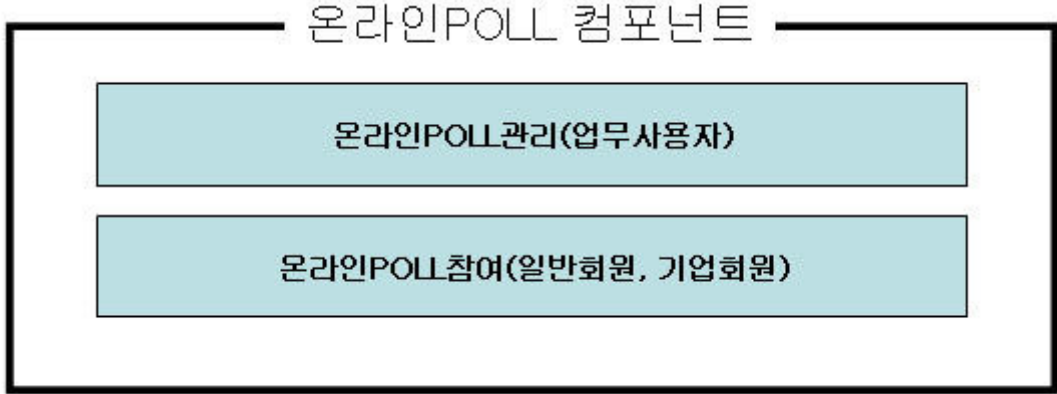


Online Poll Management

Summary

This is a component to make simple questionnaire research which occurs frequently. This provides the online poll management function which the online poll manager create items for each online poll information, and the online participation function which the online poll participant (corporate member, general member) can vote and check statistics.

- Component configuration



- Feature flow

기능 명	기능 흐름
업무사용자 관리	<div style="display: flex; justify-content: space-around; align-items: center;"> <div style="background-color: #00a0e3; color: white; padding: 5px 10px; border-radius: 5px;">관리자 로그인</div> <div style="background-color: #00a0e3; color: white; padding: 5px 10px; border-radius: 5px;">온라인POLL 관리 목록</div> <div style="background-color: #00a0e3; color: white; padding: 5px 10px; border-radius: 5px;">온라인POLL 관리 등록</div> <div style="background-color: #00a0e3; color: white; padding: 5px 10px; border-radius: 5px;">온라인POLL 관리 상세조회</div> <div style="background-color: #00a0e3; color: white; padding: 5px 10px; border-radius: 5px;">온라인POLL 항목 등록</div> <div style="background-color: #00a0e3; color: white; padding: 5px 10px; border-radius: 5px;">온라인POLL 관리 수정</div> </div>
일반회원 관리	<div style="display: flex; justify-content: space-around; align-items: center;"> <div style="background-color: #00a0e3; color: white; padding: 5px 10px; border-radius: 5px;">사용자 로그인</div> <div style="background-color: #00a0e3; color: white; padding: 5px 10px; border-radius: 5px;">온라인POLL 목록조회</div> <div style="background-color: #00a0e3; color: white; padding: 5px 10px; border-radius: 5px;">온라인POLL 참여 등록</div> <div style="background-color: #00a0e3; color: white; padding: 5px 10px; border-radius: 5px;">온라인POLL 통계확인</div> </div>
기업회원 관리	

Description

Package Dependency

The online poll management package has direct functional dependency to the common package (cmm) of element technology and authorization management package. However, to avoid error on deployment, the distribution file contains online POLL management package(opp), online POLL management package(opr), and calendar package to dependencies between packages.

- Package Dependency: [User Support Package Dependency](#)

Related Source

Online poll management

Type	Source	Remarks
Controller	egovframework.com.uss.olp.opm.web.EgovOnlinePollManageController.java	Controller class for online poll management
Service	egovframework.com.uss.olp.opm.service.EgovOnlinePollManageService.java	Service class for online poll management
ServiceImpl	egovframework.com.uss.olp.opm.service.impl.EgovOnlinePollManageServiceImpl.java	ServiceImpl Class for

		online poll management
Model	egovframework.com.uss.olp.opm.service.OnlinePollItem.java	Model Class for online poll management
Model	egovframework.com.uss.olp.opm.service.OnlinePollManage.java	VO Class for online poll management
VO	egovframework.com.cmm.ComDefaultVO.java	Search VO Class
DAO	egovframework.com.uss.olp.opm.service.impl.OnlinePollManageDao.java	Dao class online poll management
JSP	/WEB-INF/jsp/egovframework/com/uss/olp/opm/EgovOnlinePollManageList.jsp	List inquiry page for online poll management
JSP	/WEB-INF/jsp/egovframework/com/uss/olp/opm/EgovOnlinePollManageRegist.jsp	Registration page for online poll management
JSP	/WEB-INF/jsp/egovframework/com/uss/olp/opm/EgovOnlinePollManageUpdt.jsp	Update page for online poll management
JSP	/WEB-INF/jsp/egovframework/com/uss/olp/opm/EgovOnlinePollManageDetail.jsp	Detailed inquiry page for online poll management online poll management
QUERY XML	resources/egovframework/sqlmap/com/uss/olp/opm/EgovOnlinePollManage_SQL_Mysql.xml	MySQL based QUERY XML for online poll management
QUERY XML	resources/egovframework/sqlmap/com/uss/olp/opm/EgovOnlinePollManage_SQL_Oracle.xml	Oracle based QUERY XML for online poll management
QUERY XML	resources/egovframework/sqlmap/com/uss/olp/opm/EgovOnlinePollManage_SQL_Tibero.xml	Tibero based QUERY XML for online poll management
QUERY XML	resources/egovframework/sqlmap/com/uss/olp/opm/EgovOnlinePollManage_SQL_Altibase.xml	Altibase based QUERY XML for online poll management
Validator Rule XML	resources/egovframework/validator/validator-rules.xml	XML that defined the validator rule
Validator XML	resources/egovframework/validator/com/uss/olp/opm/EgovOnlinePollManage.xml	Validator XML for

		online poll management
Message properties	resources/egovframework/message/com/message-common_ko_KR.properties	Message properties for online poll management
Idgen XML	resources/egovframework/spring/context-idgen.xml	Id Idgen XML for online poll management

Online Poll Result

Type	Source	Remarks
Controller	egovframework.com.uss.olp.opr.web.EgovOnlinePollResultController.java	Controller class for online poll management
Service	egovframework.com.uss.olp.opr.service.EgovOnlinePollResultService.java	Service class for online poll management
ServiceImpl	egovframework.com.uss.olp.opr.service.impl.EgovOnlinePollResultServiceImpl.java	ServiceImpl Class for online poll result
Model	egovframework.com.uss.olp.opr.service.OnlinePollResult.java	VO Class for online poll result
DAO	egovframework.com.uss.olp.opr.service.impl.OnlinePollResultDao.java	Dao class online poll management
JSP	/WEB-INF/jsp/egovframework/com/uss/olp/opr/EgovOnlinePollResultList.jsp	List inquiry page for online poll result
QUERY XML	resources/egovframework/sqlmap/com/uss/olp/opr/EgovOnlinePollResult_SQL_Mysql.xml	MySQL based QUERY XML for online poll result
QUERY XML	resources/egovframework/sqlmap/com/uss/olp/opr/EgovOnlinePollResult_SQL_Oracle.xml	Oracle based QUERY XML for online poll result
QUERY XML	resources/egovframework/sqlmap/com/uss/olp/opr/EgovOnlinePollResult_SQL_Tibero.xml	Tibero based QUERY XML for online poll result
QUERY XML	resources/egovframework/sqlmap/com/uss/olp/opr/EgovOnlinePollResult_SQL_Altibase.xml	Altibase based QUERY XML for online poll result
Idgen XML	resources/egovframework/spring/context-idgen.xml	Id Idgen XML for online poll result

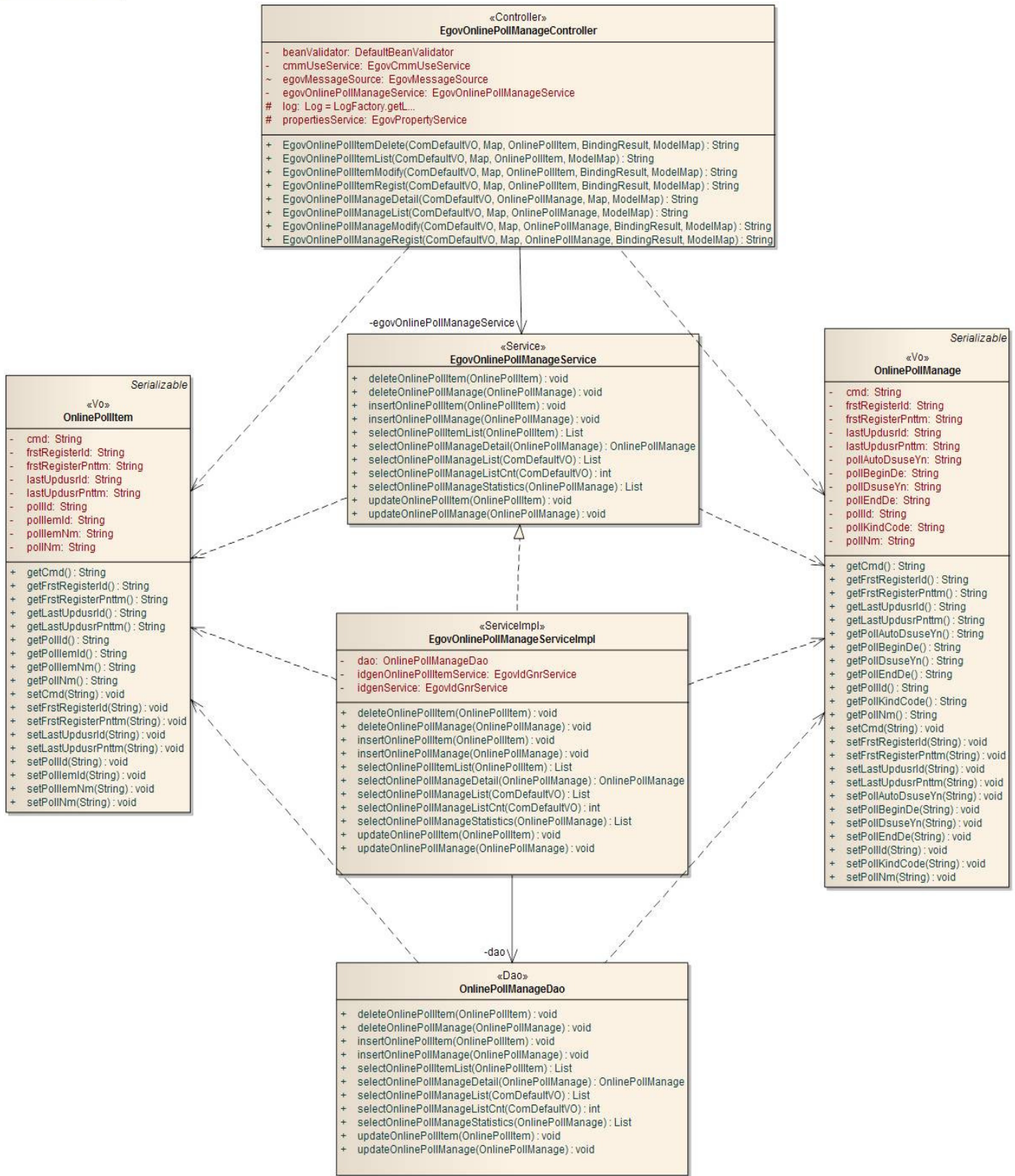
Online Poll Participation

Type	Source	Remarks
Controller	egovframework.com.uss.olp.opp.web.EgovOnlinePollPartcptnController.java	Controller class for online poll participation

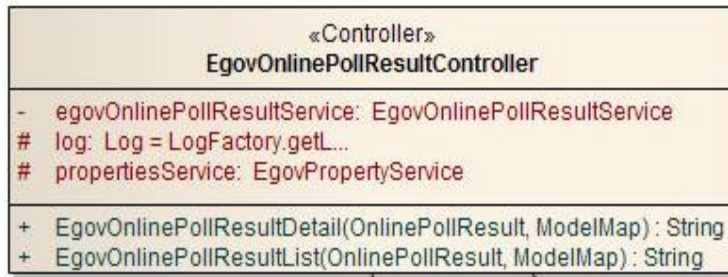
Service	egovframework.com.uss.olp.opp.service.EgovOnlinePollPartcptnService.java	Service class for online poll participation
ServiceImpl	egovframework.com.uss.olp.opp.service.impl.EgovOnlinePollPartcptnServiceImpl.java	ServiceImpl Class for online poll participation
Model	egovframework.com.uss.olp.opp.service.OnlinePollPartcptn.java	Model Class for online poll participation
DAO	egovframework.com.uss.olp.opp.service.impl.OnlinePollPartcptnDao.java	Dao class online poll participation
JSP	/WEB-INF/jsp/egovframework/com/uss/olp/opp/EgovOnlinePollPartcptnList.jsp	List inquiry page for online poll participation
JSP	/WEB-INF/jsp/egovframework/com/uss/olp/opp/EgovOnlinePollPartcptnRegist.jsp	Registration page for online poll participation
JSP	/WEB-INF/jsp/egovframework/com/uss/olp/opp/EgovOnlinePollPartcptnStatistics.jsp	Statistics page for online poll participation
QUERY XML	/egovframework/sqlmap/com/uss/olp/opp/EgovOnlinePollPartcptn_SQL_Mysql.xml	MySQL based QUERY XML for online poll participation
QUERY XML	/egovframework/sqlmap/com/uss/olp/opp/EgovOnlinePollPartcptn_SQL_Oracle.xml	Oracle based QUERY XML for online poll participation
QUERY XML	/egovframework/sqlmap/com/uss/olp/opp/EgovOnlinePollPartcptn_SQL_Tibero.xml	Tibero based QUERY XML for online poll participation
QUERY XML	/egovframework/sqlmap/com/uss/olp/opp/EgovOnlinePollPartcptn_SQL_Altibase.xml	Altibase based QUERY XML for online poll participation
Message properties	resources/egovframework/message/com/message-common_ko_KR.properties	Message properties for online poll participation
Idgen XML	resources/egovframework/spring/context-idgen.xml	Id Idgen XML for online poll participation

Class Diagram

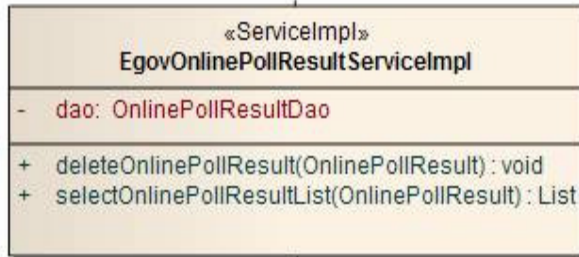
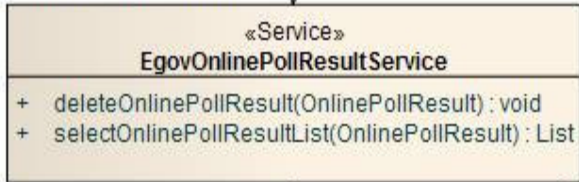
Online Poll Management



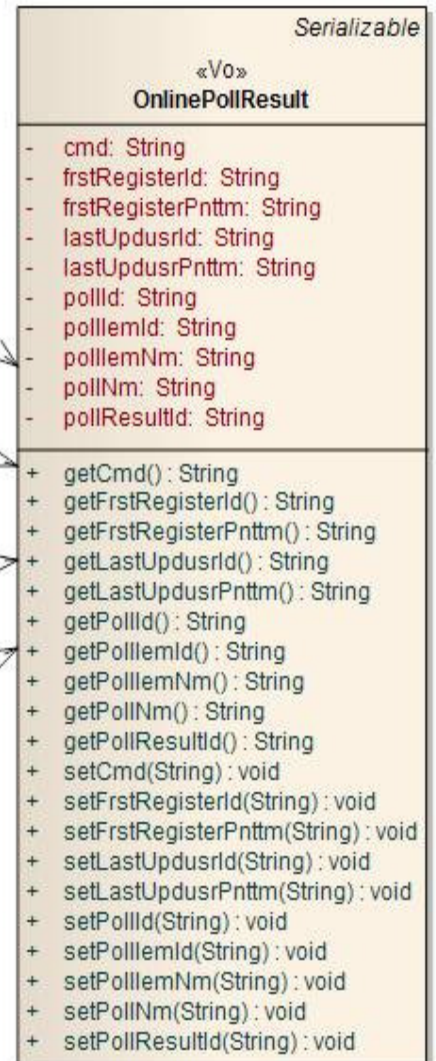
Online Poll Result



-egovOnlinePollResultService



-dao



Online Poll Participation


```
INSERT INTO COMTECOPSEQ VALUES('POLL_RUT_ID','0');
```

ID Generation Configuration (context-idgen.xml)

```
<!-- Online POLL management -->
<bean name="egovOnlinePollManageIdGnrService"
      class="egovframework.rte.fdl.idgnr.impl.EgovTableIdGnrService"
      destroy-method="destroy">
  <property name="dataSource" ref="egov.dataSource" />
  <property name="strategy" ref="onlinePollManageMsgstrategy" />
  <property name="blockSize" value="1"/>
  <property name="table" value="COMTECOPSEQ"/>
  <property name="tableName" value="POLL_MGR_ID"/>
</bean>
<bean name="onlinePollManageMsgstrategy"
      class="egovframework.rte.fdl.idgnr.impl.strategy.EgovIdGnrStrategyImpl">
  <property name="prefix" value="POLLMGR_" />
  <property name="cipers" value="12" />
  <property name="fillChar" value="0" />
</bean>

<!-- Online POLL Item -->
<bean name="egovOnlinePollItemIdGnrService"
      class="egovframework.rte.fdl.idgnr.impl.EgovTableIdGnrService"
      destroy-method="destroy">
  <property name="dataSource" ref="egov.dataSource" />
  <property name="strategy" ref="onlinePollItemMsgstrategy" />
  <property name="blockSize" value="1"/>
  <property name="table" value="COMTECOPSEQ"/>
  <property name="tableName" value="POLL_IEM_ID"/>
</bean>
<bean name="onlinePollItemMsgstrategy"
      class="egovframework.rte.fdl.idgnr.impl.strategy.EgovIdGnrStrategyImpl">
  <property name="prefix" value="POLLIEM_" />
  <property name="cipers" value="12" />
  <property name="fillChar" value="0" />
</bean>

<!-- Online POLL result-->
<bean name="egovOnlinePollResultIdGnrService"
      class="egovframework.rte.fdl.idgnr.impl.EgovTableIdGnrService"
      destroy-method="destroy">
  <property name="dataSource" ref="egov.dataSource" />
  <property name="strategy" ref="onlinePollResultMsgstrategy" />
  <property name="blockSize" value="1"/>
  <property name="table" value="COMTECOPSEQ"/>
  <property name="tableName" value="POLL_RUT_ID"/>
</bean>
<bean name="onlinePollResultMsgstrategy"
      class="egovframework.rte.fdl.idgnr.impl.strategy.EgovIdGnrStrategyImpl">
  <property name="prefix" value="POLLRUT_" />
  <property name="cipers" value="12" />
  <property name="fillChar" value="0" />
</bean>
```

Related Table

Table name	Table name(English)	Note
Online POLL management	COMTNONLINEPOLLMANAGE	Manages online POLL management.
Online POLL item	COMTNONLINEPOLLITEM	Manages online POLL item.
Online POLL result	COMTNONLINEPOLLRESULT	Manages online POLL result.

Related Code

Code Type	Code Type Name	Code ID	Code Name
COM039	Online POLL Type	001	Social Studies
COM039	Online POLL Type	002	Politics
COM039	Online POLL Type	003	Economics
COM039	Online POLL Type	004	Culture
COM039	Online POLL Type	005	Liberal Arts
COM039	Online POLL Type	006	Engineering
COM039	Online POLL Type	007	Etc

Related Function

The online poll management function is composed of **online poll management list inquiry, detailed online poll management inquiry, online poll list, online poll management item register and online poll item update, online poll management register, online poll management update, online poll result list inquiry, online poll participation register, and online poll participation statistics.**

Online poll management list inquiry

Business Rule

The manager can inquire information on the pre-registered online poll management as a list and move to registration screen by clicking the register button.

Related Codes

N/A

Screen and execution manual

Action	URL	Controller method	QueryID
List	/uss/olp/opm/listOnlinePollManage.do	egovOnlinePollManageList	"OnlinePollManage.selectOnlinePollManage"
			"OnlinePollManage.selectOnlinePollManageCnt"

🔍 온라인POLL관리 목록
--선택하세요--

조회
등록

순번	온라인POLL명	시작일	종료일	통계	결과	등록자	등록일자
1	TestData 20091013 - 100	2009-10-13	2009-10-17	보기	보기	TEST7	2009-10-13
2	소녀시대 인기도는?	2009-10-14	2009-10-31	보기	보기	TEST7	2009-10-13
3	네이버 사이트 평가?	2009-10-01	2009-10-31	보기	보기	TEST1	2009-10-12
4	프레임웍유료화	2009-10-07	2009-10-13	보기	보기	TEST6	2009-10-08
5	테스트테스트테스트테스트테스트테스트테스트테스트테스트테	2009-10-16	2009-10-30	보기	보기	TEST1	2009-10-07
6	test	2009-09-03	2009-09-25	보기	보기	TEST1	2009-09-17
7	테스트99999999	2009-09-01	2009-09-18	보기	보기	TEST1	2009-09-16
8	원더걸스 외모에 관한 여러분의 의견은?	2009-08-04	2009-08-28	보기	보기	TEST5	2009-08-05
9	소녀시대 가창력에 관한 여러분의 의견은?	2009-10-01	2009-10-31	보기	보기	TEST5	2009-08-04

Register: click the Register button to add poll in **Online poll item registration** page.
 Click the List: displays **Detailed online poll management inquiry.**

Detailed online poll management inquiry

Business rule

This is the screen by clicking the list from the online poll management list which shows detailed information on the online poll management.

Related codes

N/A

Screen and execution manual

Action	URL	Controller method	QueryID
Detailed inquiry	/uss/olp/opm/updtOnlinePollManage.do	egovOnlinePollManageDetail	"OnlinePollManage.selectOnlinePollManageDetail"
Delete online poll result information	/uss/olp/opm/updtOnlinePollManage.do	egovOnlinePollManageDetail	"OnlinePollManage.deleteOnlinePollResultAll"
Delete online poll item information	/uss/olp/opm/updtOnlinePollManage.do	egovOnlinePollManageDetail	"OnlinePollManage.deleteOnlinePollItemAll"
Delete online poll management information	/uss/olp/opm/updtOnlinePollManage.do	egovOnlinePollManageDetail	"OnlinePollManage.deleteOnlinePollManage"

🔍 온라인POLL관리 상세보기

POLL명 *	소녀시대 가창력에 관한 여러분의 의견은?
POLL시작일자 *	2009-10-01
POLL종료일자 *	2009-10-31
POLL종류 *	문화
POLL폐기유무 *	Y
POLL자동폐기유무 *	Y

🔍 온라인POLL항목 정보

온라인POLL항목		항목명	
좋다			수정 삭제
나쁘다			수정 삭제

Update: displays **Online poll item update** page.

Delete: alerts delete confirm message, and allows deletion of items.

List: displays **Online poll management list** page.

Online poll item registration

Business rule

This stores the basic information of the online manual management. The online poll item is mandatory.

Related Codes

N/A

Screen and execution manual

Action	URL	Controller method	QueryID
Register	/uss/olp/opm/registOnlinePollItem.do	egovOnlinePollItemRegist	"OnlinePollManage.insertOnlinePollItem"

온라인POLL관리 상세보기

POLL명 *	소녀시대 가창력에 관한 여러분의 의견은?
POLL시작일자 *	2009-10-01
POLL종료일자 *	2009-10-31
POLL종류 *	문화
POLL폐기유무 *	Y
POLL자동폐기유무 *	Y

온라인POLL항목 정보

항목명		
좋다	수정	삭제
나쁘다	수정	삭제

Save: stores new online poll item with input data.

Online poll item update

Business rule

This updates or deletes the basic information of the online manual management. The online poll item is mandatory.

Related Codes

N/A

Screen and execution manual

Action	URL	Controller method	QueryID
Update	/uss/olp/opm/updtOnlinePollItem.do	egovOnlinePollItemModify	"OnlinePollManage.updateOnlinePollItem"
Develop online poll result information	/uss/olp/opm/updtOnlinePollManage.do	egovOnlinePollManageDetail	"OnlinePollManage.deleteOnlinePollResultAll"
Delete online poll item information	/uss/olp/opm/updtOnlinePollManage.do	egovOnlinePollManageDetail	"OnlinePollManage.deleteOnlinePollItemAll"
Delete online poll management information	/uss/olp/opm/updtOnlinePollManage.do	egovOnlinePollManageDetail	"OnlinePollManage.deleteOnlinePollManage"

온라인POLL관리 상세보기

POLL명 *	소녀시대 가창력에 관한 여러분의 의견은?
POLL시작일자 *	2009-10-01
POLL종료일자 *	2009-10-31
POLL종류 *	문화
POLL폐기유무 *	Y
POLL자동폐기유무 *	Y

온라인POLL항목 정보

항목명		
좋다		수정 삭제
이상하다		수정 삭제
나쁘다		수정 삭제

Update: updates modified data.
Delete: deletes selected item.

Online poll management registration

Business Rule

This stores the basic information of the online poll management. The red star (*) on the right shows the mandatory item.

Related Codes

N/A

Screen and execution manual

Action	URL	Controller method	QueryID
Register	/uss/olp/opm/registOnlinePollManage.do	egovOnlinePollManageRegist	"OnlinePollManage.insertOnlinePollManage"

온라인POLL관리 등록

POLL명 *	소녀시대 가창력에 관한 여러분의 의견은?		
POLL시작일자 *	2009-10-01		
POLL종료일자 *	2009-10-31		
POLL구분 *	<input type="text" value="문화"/>		
POLL폐기유무 *	<input checked="" type="radio"/> N	<input type="radio"/> Y	
POLL자동폐기유무 *	<input type="radio"/> N	<input checked="" type="radio"/> Y	

List: displays **Online poll management list** page.
Save: stores online poll management information with input data.

Online poll management update

Business rule

This stores the basic information of the online poll management. The red star (*) on the right of the type shows the mandatory item.

Related Code

N/A

Screen and execution manual

Action	URL	Controller method	QueryID
Update	/uss/olp/opm/updtOnlinePollManage.do	egovOnlinePollManageModify	"OnlinePollManage.updateOnlinePollManage"

온라인POLL관리 수정

POLL명 *	소녀시대 가창력에 관한 여러분의 의견은?		
POLL시작일자 *	2009-10-01		
POLL종료일자 *	2009-10-31		
POLL구분 *	문화		
POLL폐기유무 *	<input type="radio"/> N	<input checked="" type="radio"/> Y	
POLL자동폐기유무 *	<input type="radio"/> N	<input checked="" type="radio"/> Y	

Update: stores modified data.

List: displays **Online poll management list** page.

Online poll result list inquiry

Business Rule

The manager can inquire or delete the pre-registered online poll result information.

Related Codes

N/A

Screen and execution manual

Action	URL	Controller method	QueryID
List Inquiry	/uss/olp/opr/listOnlinePollResult.do	egovOnlinePollResultList	"OnlinePollResult.selectOnlinePollResult"
Delete	/uss/olp/opr/delOnlinePollResult.do	egovOnlinePollResultDetail	"OnlinePollResult.deleteOnlinePollResult"

온라인POLL결과 목록

순번	온라인POLL항목	등록자	등록일자	
1	나쁘다	TEST6	2009-10-08	<input type="button" value="삭제"/>
2	나쁘다	TEST5	2009-10-08	<input type="button" value="삭제"/>
3	나쁘다	TEST5	2009-10-08	<input type="button" value="삭제"/>
4	나쁘다	TEST5	2009-10-08	<input type="button" value="삭제"/>
5	나쁘다	TEST5	2009-10-08	<input type="button" value="삭제"/>
6	나쁘다	TEST5	2009-10-08	<input type="button" value="삭제"/>
7	나쁘다	TEST5	2009-10-08	<input type="button" value="삭제"/>

Register: click the Register button to add new poll result in **Online poll management registration** page.

List: displays **Detailed inquiry of online poll management** page.

Online poll participation registration

Business Rule

This stores the basic information of the online poll management. The item name is mandatory.

Related Codes

N/A

Screen and execution manual

Action	URL	Controller method	QueryID
Register	/uss/olp/opp/registOnlinePollPartcptn.do	egovOnlinePollPartcptnRegist	"OnlinePollPartcptn.insertOnlinePollResult"
List Inquiry	/uss/olp/opp/listOnlinePollPartcptn.do	egovOnlinePollPartcptnList	"OnlinePollPartcptn.selectOnlinePollManageList"
			"OnlinePollPartcptn.selectOnlinePollManageListCnt"

온라인POLL참여 등록

POLL명 *	소녀시대 인기도는?
POLL시작일자 *	2009-10-14
POLL종료일자 *	2009-10-31
POLL종류 *	경제

높다	<input checked="" type="radio"/>
낮다	<input type="radio"/>

목록 저장

Save: stores new online poll participation information with input data.

List: displays **Online poll participation list** page.

Online poll participation statistics

Business Rule

The online poll items of each online poll management is expressed as the number of cases.

Related Code


N/A

Screen and execution manual

Action	URL	Controller method	QueryID
Statistics inquiry	/uss/olp/opp/statisticsOnlinePollPartcptn.do	egovOnlinePollManageStatistics	"OnlinePollPartcptn.selectOnlinePollManageDetail"
			"OnlinePollPartcptn.selectOnlinePollItem"
			"OnlinePollPartcptn.selectOnlinePollPartcptnStatistics"

온라인POLL관리 통계

POLL명 *	소녀시대 인기도는?
POLL시작일자 *	2009-10-14
POLL종료일자 *	2009-10-31
POLL종류 *	경제

높다	 (1)건
낮다	0건

목록

List: displays **Online poll participation list** page.

Reference

- Refer to Operation Environment: [ID Generation Service](#)